



© Hames van Rijn

AMORITO

BUILT: 2012

CLASS: BV

FLAG: LIBERIA



BUILDER: Sungdong Shipbuilding & Marine Engineering Co. Ltd, South Korea

VESSEL PARTICULARS

Type of vessel:	CAPESIZE BULK CARRIER, I +HULL +MACH BULK CARRIER CSR CPS (WBT) BC-A(HOLDS 2,4,6,8 MAY BE EMPTY) ESP GRAB[20] UNRESTRICTED NAVIGATION+VERISTAR HULL, +AUT-UMS, INWATERSURVEY, MONSHAFT
Summer deadweight:	179,322 MT
Summer draft:	18.322 m
LOA:	292.00 m
Beam:	45.00 m
GT / NT:	93,006/59,204
Grain capacity:	H1:19,364.0, H2:22,320.7, H3:22,404.9, H4:22,404.9, H5:23,203.5 H6:23,217.7, H7:22,406.9, H8:22,040.4, H9:20,235.5 m ³
TPC at summer draft:	122.4

CARGO ARRANGEMENTS

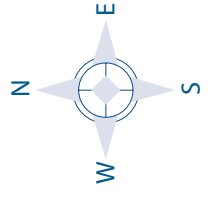
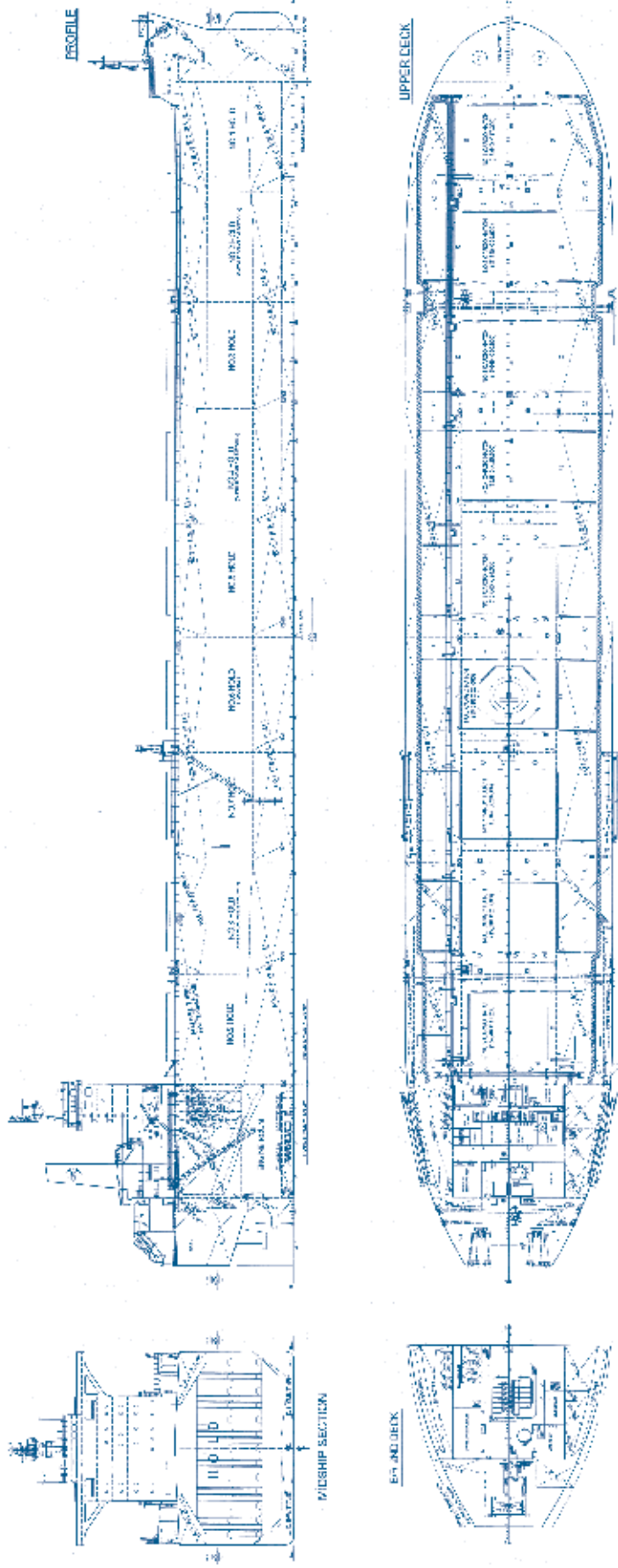
Cargo holds / hatches:	9 holds / 9 hatches strengthened for heavy cargoes
Australian hold ladder:	Fitted in all holds
CO ₂ :	Not Fitted
Ventilation:	Natural Ventilation
Hatch covers type:	Weather tight, side rolling type
Hatch dimensions:	No 1 & 9: 15.64 x 17.20 m / No. 2-8: 15.64 x 20.60 m

PROPULSION

Main engine:	1 MAN B&W 6S70MC-C8 TIER 1, 19,620 Kw x 91 RPM
Propeller type:	SOLID TYPE 4 BLADES-RIGHT HAND
Generators:	3 Diesel generators 730 kw each ALL DETAILS ABOUT

CAPITAL EXECUTIVE

Ship Management Corp.



AMORITO

CAPITAL-EXECUTIVE SHIP MANAGEMENT CORP.
3, Iassonos St., Piraeus 185 37, GREECE
Tel: +30 210 4558600, Fax: +30 210 4558655
e-mail: info@capital-executive.gr - www.capital-executive.gr